

Enrollment

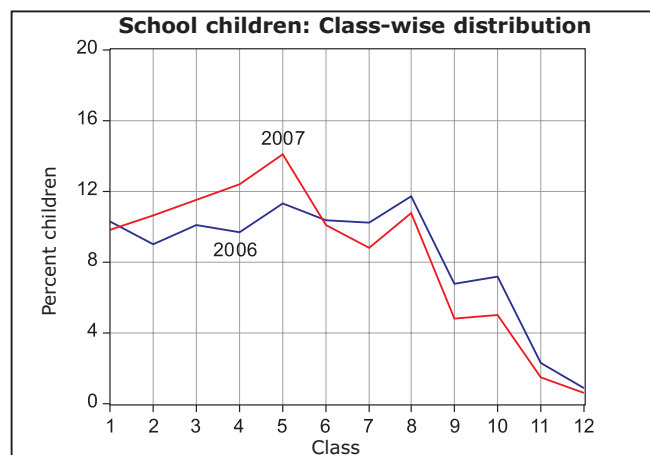
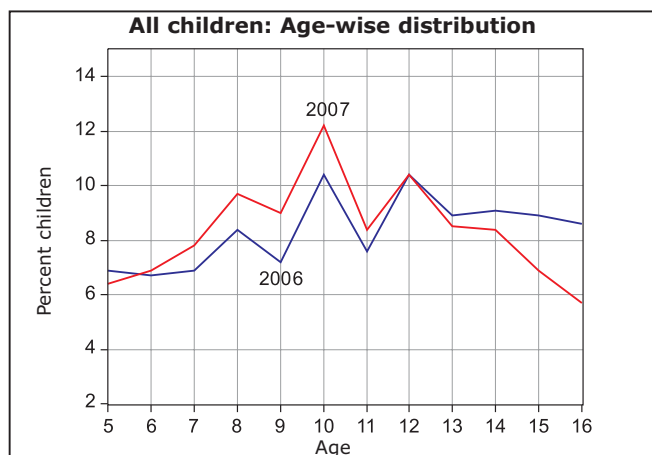
School enrollment and out of school children 2006 vs. 2007

	2006					2007						
	% Children in each age group in different types of schools				% Out of school	Total	% Children in each age group in different types of schools				% Out of school	Total
	Govt.	Pvt.	Other (Madarsa + EGS)	Not in School			Govt.	Pvt.	Other (Madarsa + EGS)	Not in School		
Age: 6 -14 ALL	54.9	41.5	0.4	3.2	100	64.5	31.8	0.7	2.9	100		
Age: 7-16 ALL	57.5	37.2	0.3	5.0	100	64.3	30.5	0.6	4.6	100		
Age: 7- 10 ALL	50.7	46.7	0.5	2.0	100	64.2	33.1	0.7	2.0	100		
Age: 7-10 BOYS	47.8	49.6	0.6	2.1	100	61.9	35.4	0.6	2.0	100		
Age: 7-10 GIRLS	55.0	42.6	0.5	2.0	100	67.4	30.0	0.7	2.0	100		
Age: 11-14 ALL	61.4	34.0	0.2	4.4	100	66.9	28.4	0.6	4.2	100		
Age: 11-14 BOYS	58.8	37.1	0.2	3.9	100	65.7	30.1	0.6	3.7	100		
Age: 11-14 GIRLS	64.6	30.2	0.2	5.0	100	68.5	26.2	0.5	4.9	100		
Age: 15-16 ALL	62.3	25.9	0.0	11.8	100	57.0	28.5	0.8	13.8	100		
Age: 15-16 BOYS	61.8	26.4	0.0	11.8	100	56.7	29.6	0.7	13.0	100		
Age: 15-16 GIRLS	62.9	25.4	0.0	11.7	100	57.4	27.0	0.8	14.8	100		

Note: "Not in school" includes children who have never gone to school or have dropped out.

Age and Class

Age-wise and class-wise distribution of children in sample



Young Children

In pre-school (Balwadi/Anganwadi) or in school 2006 vs. 2007

	2006					2007						
	In balwadi or anganwadi	% Children			Not going anywhere	Total	In balwadi or anganwadi	% Children			Not going anywhere	Total
		Govt.	Pvt.	Other School				Govt.	Pvt.	Other School		
Age: 3 ALL	54.5				45.5	100	69.3				30.7	100
Age: 4 ALL	71.4				28.6	100	78.5				21.5	100
Age: 5 ALL	21.2	22.8	46.1	1.1	8.8	100	19.2	34.2	39.7	1.3	5.7	100
Age: 6 ALL	3.8	37.3	54.7	0.5	3.6	100	4.9	50.2	40.9	1.8	2.3	100

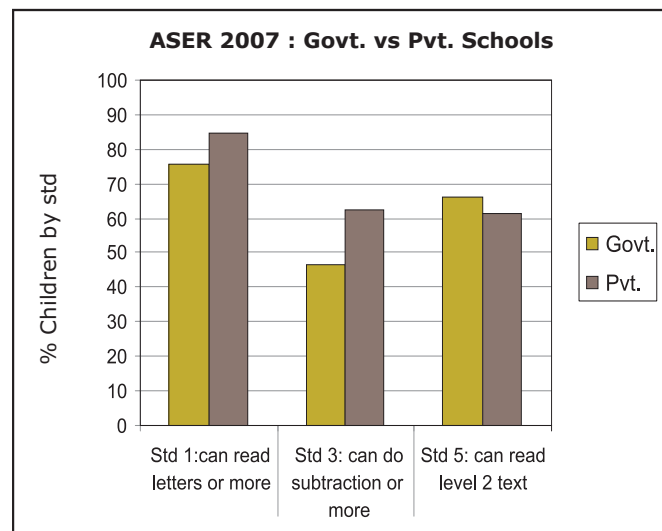
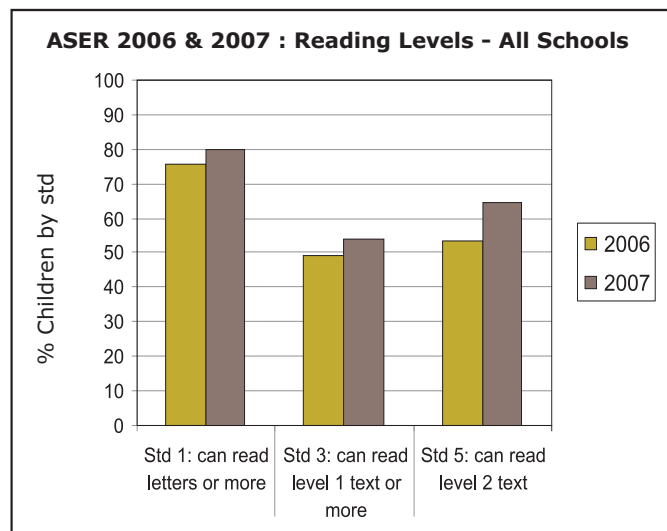
Learning Level

Reading level: % Children who can read						
Std.	Nothing	Letter	Word	Level 1 (Std 1) Text	Level 2 (Std 2) text)	Total
I	19.9	47.4	22.0	4.7	6.0	100
II	6.2	28.9	37.7	14.3	13.0	100
III	2.9	15.0	28.4	24.4	29.4	100
IV	2.0	8.5	17.7	24.2	47.6	100
V	0.9	4.9	9.0	20.5	64.7	100
VI	0.8	4.7	7.3	14.3	73.0	100
VII	0.5	2.4	4.8	10.2	82.2	100
VIII	0.2	1.6	2.8	6.8	88.6	100
Total	3.9	13.6	16.3	15.6	50.6	100

Arithmetic level: % Children who can						
Std.	Nothing	Recognize Numbers		Subtract	Divide	Total
		1-9	10-99			
I	22.3	44.3	20.6	7.1	5.7	100
II	9.4	32.6	29.5	17.8	10.7	100
III	3.8	19.7	24.3	31.7	20.4	100
IV	2.3	11.1	17.1	31.2	38.4	100
V	1.7	6.7	9.9	27.7	54.1	100
VI	1.3	5.0	8.9	21.6	63.3	100
VII	0.6	3.5	5.0	16.7	74.2	100
VIII	0.3	2.4	3.5	12.0	81.9	100
Total	4.9	15.2	14.9	21.5	43.5	100

Only subtraction and division data comparable with previous ASER.

Comparisons



English reading level: % Children who						
Std.	Cannot read capital letters	Can read capital letters	Can read small letters	Can read simple words	Can read easy sentences	Total
I	32.3	32.7	18.7	10.4	5.9	100
II	19.8	27.3	25.5	17.7	9.7	100
III	12.8	19.2	25.3	24.6	18.1	100
IV	8.6	13.7	17.8	30.8	29.2	100
V	4.9	9.4	12.8	29.8	43.2	100
VI	3.3	8.4	10.1	24.8	53.4	100
VII	2.5	4.3	5.9	20.2	67.1	100
VIII	1.7	3.7	4.4	13.4	76.8	100
Total	10.4	14.7	15.3	22.1	37.6	100

English comprehension		
Std.	Of those who can read words, % who can tell meaning of the words	Of those who can read sentences, % who can tell meaning of sentences
I	49.0	86.5
II	64.6	88.4
III	57.7	89.2
IV	65.3	83.3
V	64.2	88.2
VI	70.8	90.4
VII	66.3	90.3
VIII	71.6	92.7
Total	64.4	89.6

Comprehension & Problem solving

Ability of children by reading level to read and answer orally

Children in age group : 6 to 10				Children in age group : 11 to 14			
Reading level	% Children in specific reading level	% at each level who can orally answer questions		Reading level	% Children in specific reading level	% at each level who can orally answer questions	
		based on Std 1 level text only	based on Std 2 level text			based on Std 1 level text only	based on Std 2 level text
Word	23.0	14.5	7.8	Word	7.1	36.2	24.3
Std 1 level text	18.7	72.5	38.8	Std 1 level text	13.2	81.2	51.4
Std 2 level text	35.1	94.4	90.0	Std 2 level text	74.8	97.5	94.4

Ability of children by age to listen to a subtraction problem and answer

In-school children			
Age group	% Children who can solve		
	None	Simple problem only	Both problems
6 to 8	67.2	3.5	28.0
9 to 10	32.0	4.7	61.7
11 to 14	12.9	3.5	82.2

Children not in-school			
Age group	% Children who can solve		
	None	Simple problem only	Both problems
6 to 8	87.1	2.2	8.4
9 to 10	69.0	4.5	22.5
11 to 14	54.7	3.4	39.7

ਅੱਜ ਮੇਰੇ ਮਾਮਾ ਜੀ ਆਏ।
 ਉਹ ਫਲ ਲੈ ਕੇ ਆਏ।
 ਕੋਲੇ ਬਹੁਤ ਸਿੱਠੇ ਸਨ।
 ਸੇਬ ਵੀ ਬਹੁਤ ਸਵਾਦ ਸਨ।

ਮੇਰੀ ਭੈਣ ਕੰਚਨ ਮੇਰੇ ਨਾਲੋਂ ਤਿੰਨ ਸਾਲ ਛੋਟੀ ਹੈ। ਉਹ ਸਕੂਲ ਨਹੀਂ ਜਾਂਦੀ, ਉਹ ਘਰੇ ਖੇਡਦੀ ਰਹਿੰਦੀ ਹੈ। ਮੇਰੀਆਂ ਕਿਤਾਬਾਂ ਦੇਖਦੀ ਰਹਿੰਦੀ ਹੈ। ਮੈਂ ਆਪਣੀ ਭੈਣ ਨਾਲ ਖੇਡਦਾ ਹਾਂ। ਕੱਖੜੀ ਵਾਲੇ ਦਿਨ ਉਹ ਮੇਰੇ ਕੱਖੜੀ ਬੰਨ੍ਹਦੀ ਹੈ। ਮੈਂ ਉਸਨੂੰ ਪੈਸੇ ਦਿੰਦਾ ਹਾਂ ਤੇ ਉਹ ਮੈਨੂੰ ਬਰਫੀ ਖਿਲਾਉਂਦੀ ਹੈ। ਅਸੀਂ ਇਕ ਦੂਜੇ ਨੂੰ ਬਹੁਤ ਪਿਆਰ ਕਰਦੇ ਹਾਂ।

- 1) ਮਾਮਾ ਜੀ ਕੀ ਲੈ ਕੇ ਆਏ ?
 2) ਅੱਜ ਸਾਡੇ ਘਰ ਕੌਣ ਆਇਆ ?

- 3) ਕੰਚਨ ਆਪਣੇ ਭਰਾ ਨੂੰ ਕੀ ਖਵਾਉਂਦੀ ਹੈ ?
 4) ਕੰਚਨ ਸਾਰਾ ਦਿਨ ਕੀ ਕਰਦੀ ਰਹਿੰਦੀ ਹੈ ?

- (1) ਤੁਹਾਡੇ ਕੋਲ 50 ਰੁਪਏ ਹਨ। ਤੁਸੀਂ 35 ਰੁਪਏ ਦੇ ਜੁੱਤੇ ਖਰੀਦੋ। ਹੁਣ ਤੁਹਾਡੇ ਕੋਲ ਕਿੰਨੇ ਰੁਪਏ ਬਚੇ ਹਨ ?
 (2) ਤੁਹਾਡੇ ਕੋਲ 50 ਰੁਪਏ ਹਨ। ਤੁਸੀਂ 28 ਰੁਪਏ ਦੀ ਮਠਿਆਈ ਖਰੀਦੋ। ਹੁਣ ਤੁਹਾਡੇ ਕੋਲ ਕਿੰਨੇ ਰੁਪਏ ਬਚੇ ਹਨ ?

Ability of children by arithmetic level to listen to a subtraction problem and answer

Children in age group : 6 to 10				
Arithmetic level	% Children in specific arithmetic level	% Children in specific arithmetic level who can solve		
		None	Simple problem only	Both problems
Number recognition 10-99	20.5	81.4	5.1	12.2
Subtraction	24.1	29.7	8.3	59.6
Division	28.6	8.5	2.0	88.3

Children in age group : 11 to 14				
Arithmetic level	% Children in specific arithmetic level	% Children in specific arithmetic level who can solve		
		None	Simple problem only	Both problems
Number recognition 10-99	7.7	56.8	6.7	34.6
Subtraction	19.8	16.2	9.2	71.0
Division	66.0	1.6	1.5	96.2

School going children attending tuition class

Std.	% Children							
	I	II	III	IV	V	VI	VII	VIII
Govt. school	9.1	11.7	13.8	13.6	16.2	14.6	12.7	20.4
Pvt. school	22.8	20.9	23.0	30.9	28.7	20.7	26.2	29.6



School Observations: Schools visited - Primary (Std 1-4/5): 358; Primary+Upper-primary (Std 1-8): 48

Teacher attendance	2005		2007	
	Std. 1-4/5	Std. 1-8	Std. 1-4/5	Std. 1-8
	185	82	345	47
% teachers attending (average)	76.5	74.2	85.3	87.1
% schools with no teacher present	6.3	7.6	0.0	0.0
% schools with all teachers present	48.0	21.5	55.7	46.5

Pupil teacher ratio (median)	2005		2007	
	Std. 1-4/5	Std. 1-8	Std. 1-4/5	Std. 1-8
Based on children enrolled & teachers appointed	32.2	26.2	31.9	26.9
Based on children & teachers present	35.5	28.5	29.4	24.0

Water/toilet and midday meal	2005		2007	
	Std. 1-4/5	Std. 1-8	Std. 1-4/5	Std. 1-8
% Schools				
Schools with no water provision	5.4	2.4	4.0	2.1
Schools with water provision but water not available	12.5	16.7	11.5	6.3
Schools with water provision and water available	82.1	81.0	84.5	91.7
Schools with no toilet provision	5.6	0.0	3.4	0.0
Schools with toilet provision but not being used	8.9	7.3	7.3	0.0
Schools with toilet provision and use	85.6	92.7	89.3	100.0
Schools with midday meal being served on that day	20.5	9.8	83.2	89.6

Note: ASER 2007 survey was carried out in October and November 2007. One govt. school with primary grades was visited in the sampled village. If there was more than one govt. school with primary grades, then the school with the highest enrollment was visited. Hence the schools visited in the survey do not represent a random sample from the district. The school visits were generally done either on a Saturday or a Monday.

Children's attendance	2005		2007	
	Std. 1-4/5	Std. 1-8	Std. 1-4/5	Std. 1-8
% enrolled children attending (average)	90.0	87.2	80.6	81.5
% schools with less than 50% enrolled children attending	2.2	0.0	4.1	2.2
% schools with 75% and more enrolled children attending	80.0	89.2	72.5	77.8

School grants and teacher grants	2006		2007*	
	Std. 2	Std. 4	Std. 2	Std. 4
% Schools				
Teacher received TLM grant	70.7	68.9	54.0	53.6
School received school maintenance grant	87.4		65.1	

Multigrade classes	2007	
	Std. 1-4/5	Std. 1-8
% Schools		
Schools in which...		
Std II class sits with another class	48.8	36.2
Std IV class sits with another class	37.9	36.4

Over 90% classes that were visited have blackboards. In over 90% of these classes, most children have textbooks, notebooks and pen or pencil.

Please note that while 2005 data was collected during ASER 2005, 2006 data reported in the Grants table was collected in ASER 2007 by asking for last year's grant information to the respondent.

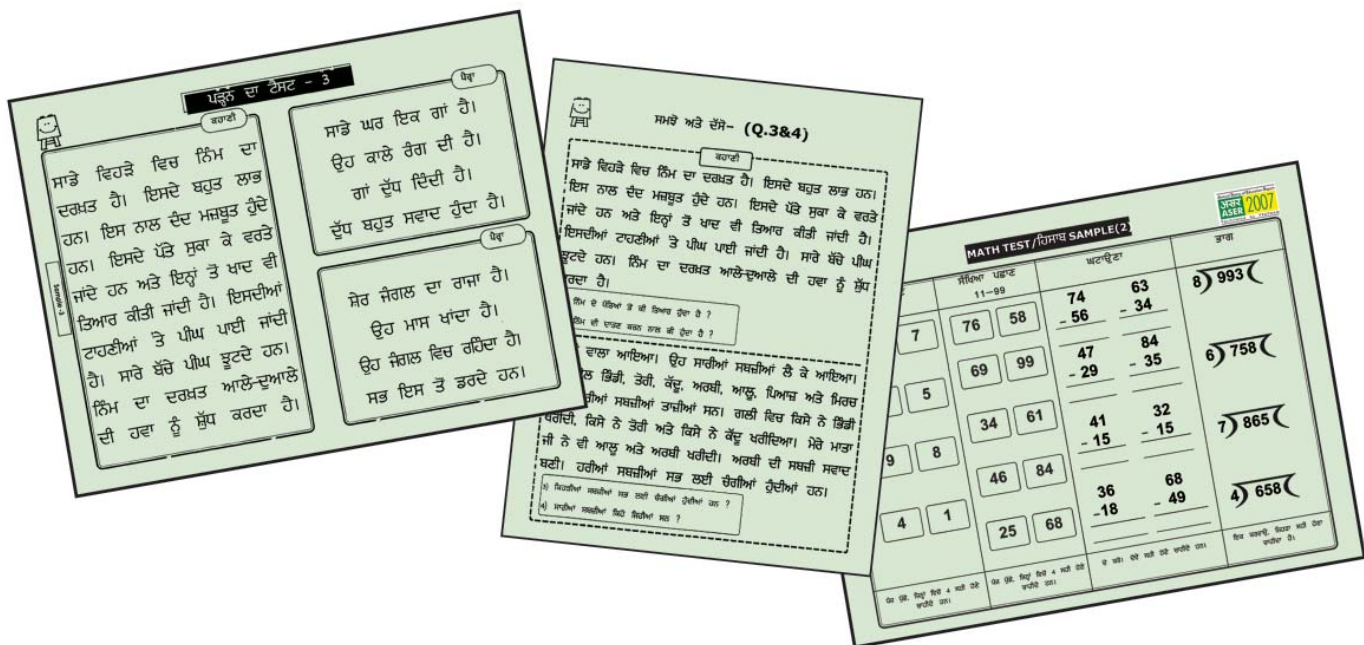
ਕਮਜ਼ੋਰ ਸੇਵਾ ਕੀ ਗਈ ਸੀ।
 ਕੁਝ ਪਿੰਡ ਵਿੱਚ ਗੱਡੀ ਖੋਲ੍ਹੀ।
 ਕੁਝ ਸੇਵੇ ਸਹੀ ਅੰਦਰ ਨਿਰਮਾਣੀ।
 ਅੰਦਰ ਖਰਚੇ ਲਿਖੇ ਸਨ।

ਸਾਡੇ ਟਾ ਮਹੀਨੇ ਦੇ /
 ਕਮੀ ਹੈ ਗਿਆ ਹੈ /
 ਖਰਚੇ ਮਹੀਨੇ ਵਿੱਚ ਕਰਾ ਕਰੇ ਹਨ।
 ਵਧੇ ਵਧੀ ਖਰਚੇ ਹਨ।

*Grants for 2007 may be lower than 2006 since the survey was conducted in the middle of the year.

Performance of districts

District	Pre- school	Out of school	Private school	Std 1-2 : Learning levels			Std 3-5 : Learning levels		
	% Children (Age 3-4) in Anganwadi or other pre-school	% Children (Age 6-14) Out of school	% Children (Age 6-14) in Private school	% Children (Std 1-2) who CAN READ letters, words or more in OWN LANGUAGE	% Children (Std 1-2) who CAN RECOGNIZE NUMBERS (1-9) or more	% Children (Std 1-2) who CAN READ letters or more in ENGLISH	% Children (Std 3-5) who CAN READ Level 1 (Std 1) text or more in OWN LANGUAGE	% Children (Std 3-5) who CAN SUBTRACT or do more	% Children (Std 3-5) who CAN READ sentences in ENGLISH
Bhatinda	60.2	3.7	36.3	95.7	91.9	80.8	84.7	84.9	47.1
Faridkot	76.8	5.7	39.3	91.4	90.9	83.2	55.2	60.3	10.2
Fatehgarh Sahib	76.9	1.8	35.4	88.0	85.5	84.2	75.5	72.8	32.0
Firozpur	91.6	8.8	28.4	82.3	82.7	68.4	58.3	62.1	20.9
Gurdaspur	93.3	1.1	38.7	91.8	86.8	84.1	87.9	86.6	35.9
Hoshiarpur	72.1	1.0	17.4	92.8	88.7	85.4	71.6	65.1	22.8
Jalandhar	57.5	6.2	36.4	95.8	92.4	90.4	72.5	72.3	29.9
Kapurthala	54.4	2.8	38.9	80.5	78.8	68.7	52.6	47.7	28.8
Ludhiana	62.5	1.6	20.4	80.5	67.5	50.3	77.1	75.2	36.5
Mansa	53.7	3.2	38.2	90.3	88.0	77.6	72.8	68.7	36.9
Moga	77.4	4.5	34.6	92.9	91.6	87.2	81.8	74.3	48.0
Muksar	71.4	3.9	29.2	87.3	91.6	80.9	73.4	71.6	34.7
Nawashehar	93.8	0.7	6.3	93.1	86.1	77.1	73.1	71.7	32.2
Sangrur*		0.5	32.2	98.2	96.3	88.8	91.3	91.3	45.6
SAS Nagar	77.3	1.2	35.6	95.2	94.2	93.7	71.7	70.6	43.4
Patiala	53.5	4.4	40.8	73.3	78.2	60.2	66.5	49.8	23.9
Rupnagar	80.6	0.3	40.4	92.9	88.3	84.4	81.9	86.7	33.6
Amritsar*		4.4	34.2	93.4	90.5	82.2	50.8	46.1	20.7
Tarn Taran	60.3	0.5	41.4	61.5	63.8	34.2	27.8	26.9	4.3
Total	73.2	2.9	31.8	87.2	84.5	74.3	71.4	68.9	31.1



* Blank cells indicate insufficient data.